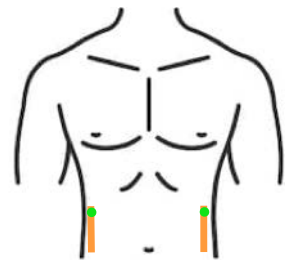
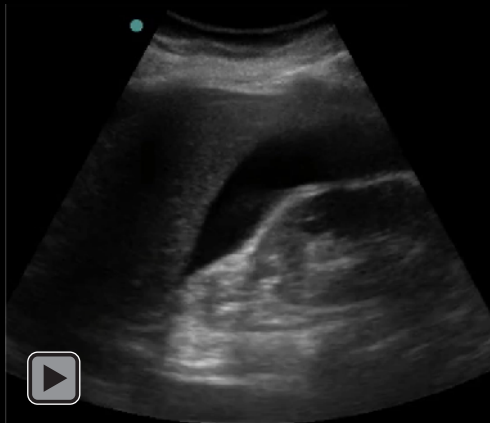




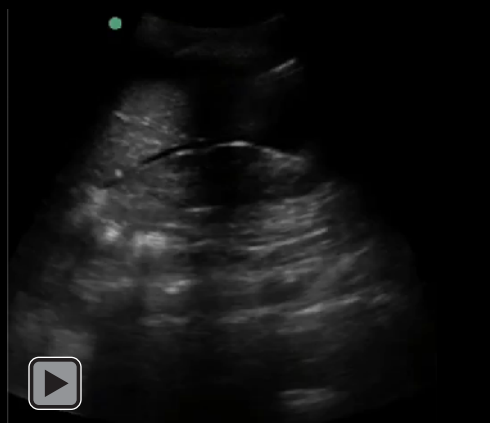
eFAST : RUQ & LUQ



Positive RUQ



Positive LUQ



Purpose: To identify free fluid in the abdomen in trauma

Probe: Curvilinear or Phased array (Abdo preset)

Orientation: Marker to patient's head

Anatomic Landmarks: Posterior axillary line at xiphoid process

Areas of interest :

LUQ 1) Splenorenal space,
2) Subdiaphragm space, * Most sensitive – MUST see 6-9 o'clock
3) Spleen caudal tip

RUQ 1) Liver caudal tip, *Most sensitive
2) Hepatorenal space

Interpretations: Pos scan = FF in area of interest

Pitfalls: Free fluid is irregular.
If it is contained, then may be vascular or contained structure (ie cyst, gallbladder)

False Positive: Perinephric fat (bilateral and symmetrical)

Fluid but not blood

Ascites
Physiological fluid (women)
Bladder rupture

Watch Out!: Delayed presentations can lead to clotted blood that can be a false negative

Troubleshooting: Decrease gain to enhance black (free fluid). Bowel gas = Pt takes a breath.
Rib shadows = Rotate probe marker towards the stretcher.
If negative put the patient in Trendelenburg and repeat scan in 15 minutes.