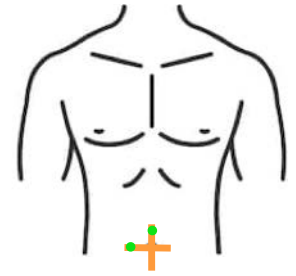
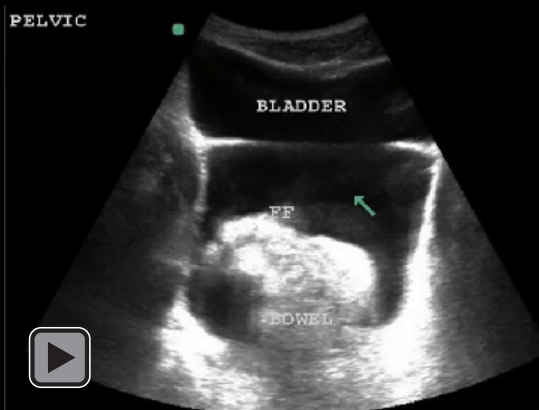




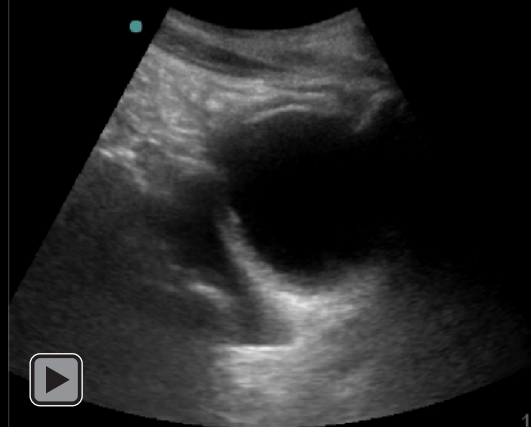
# eFAST : Pelvis



Positive Pelvis



Positive - Male - Longitudinal



**Purpose:** To identify intra-peritoneal fluid in blunt abdominal trauma

**Probe:** Curvilinear or phased-array (Abdo preset)

**Orientation:** Marker to patients right (transverse) and head (longitudinal)

**Anatomic Landmarks:** Pubic symphysis

**Sono Landmarks:** Bladder

**Area of interest:** Men = Rectovesicular pouch  
Women = Rectouterine pouch & Pouch of Douglas

**Interpretations:** FF (black) in dependant regions

**False Positive:** Prostate (in males)

Fluid but not blood

Ascites

Physiological fluid (women)

Bladder rupture

**Watch Out!:** Delayed presentations can lead to clotted blood (may appear iso or hyperechoic) that can be a false negative

**Troubleshooting :** Decrease gain to enhance black (free fluid).  
Full bladder best.  
Use bladder as a window to see areas of interest if bowel gas is in the way.